

# PROPOSED STIKLAND INDUSTRIAL IMPROVEMENT DISTRICT



Feasibility of establishing an SRA

## Would you like to work in an area where you could:

- Feel safe at your business?
- Appreciate clean pavements?
- With staff that feels secure walking from transport to their place of work?
- Leave your vehicle parked in the street and find that it had not been broken into?
- Drive on roads without potholes and with effective signage?
- Support unemployed people?

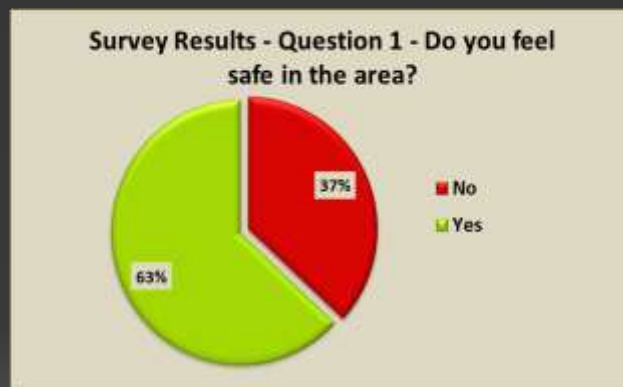
## Stikland Industrial Area could have this future.... but there are some challenges

- A perception survey amongst 84 businesses was conducted in February 2012
- 27% were property owners, 73% tenants
- The survey questions were grouped into 5 sections, each focussing on five general urban issues namely:
  - Section 1 - Safety and security
  - Section 2 - Litter and cleanliness
  - Section 3 - Lighting & marking of streets and pavements
  - Section 4 - Public environment
  - Section 5 - Social environment

ge+centric



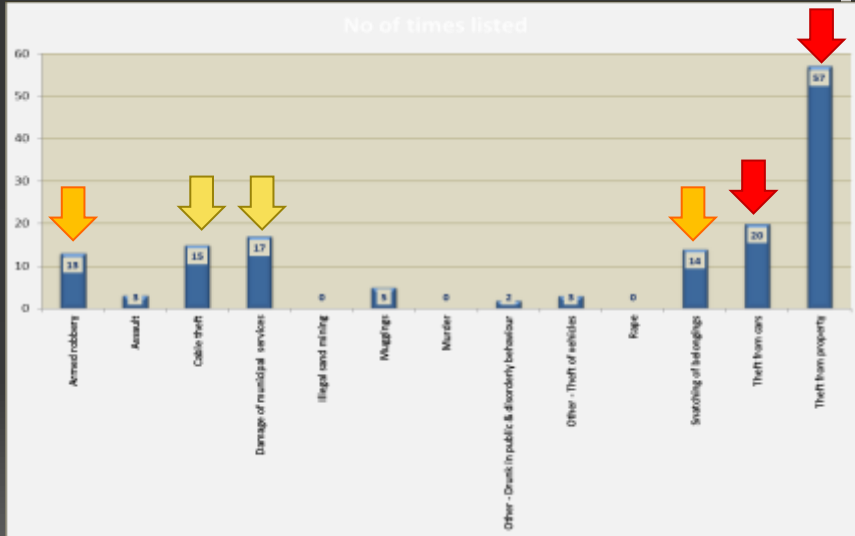
## Perception on safety in Stikland Industrial



ge+centric



## Perception on safety in Stikland Industrial



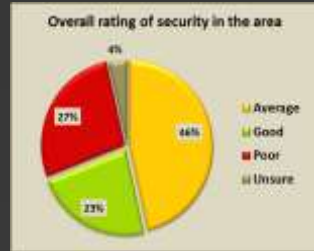
## Perception on safety in Stikland Industrial



= 68%



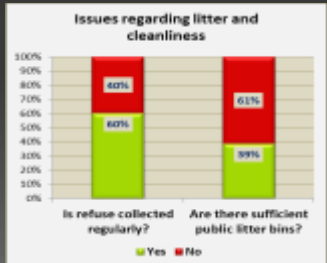
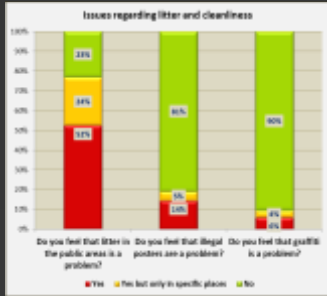
## Perception on safety in Stikland Industrial



## Perception on safety in Stikland Industrial

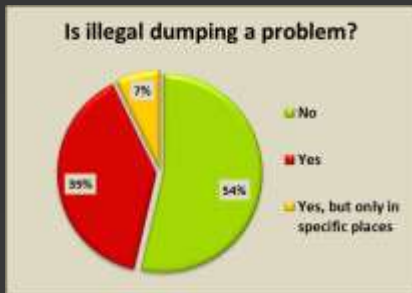


## Perception on public cleaning



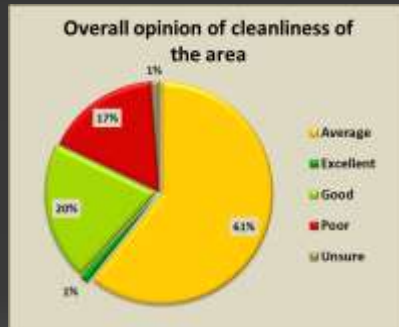
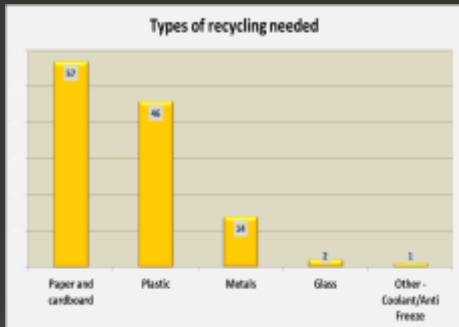
geoscentric

## Perception on public cleaning



geoscentric

## Perception on public cleaning



gecentric



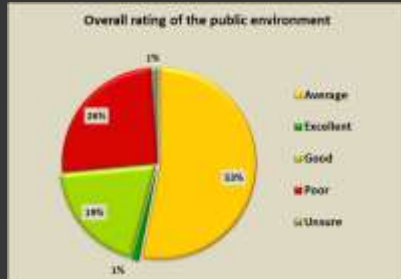
## Perception on public streets and signage



gecentric



## Perception on public environment



geoscentric

STIKLAND INDUSTRIAL  
CITY DEVELOPMENT DEPARTMENT

## Perception on public environment

Most of the comments received refer to the fact that on some roads pavements do not exist, especially in Willow Road while it is also indicated that in many cases vehicles are parked on the pavements and make pedestrian use impossible. In particular, Willow Road is mentioned for its flooding during winter rains when only one lane of traffic is open and it is shared by vehicles and pedestrians at the same time, especially in the mornings and afternoons when people go to- or leave work

geoscentric

STIKLAND INDUSTRIAL  
CITY DEVELOPMENT DEPARTMENT



## Perception on public environment



geoscentric



## Perception on public environment



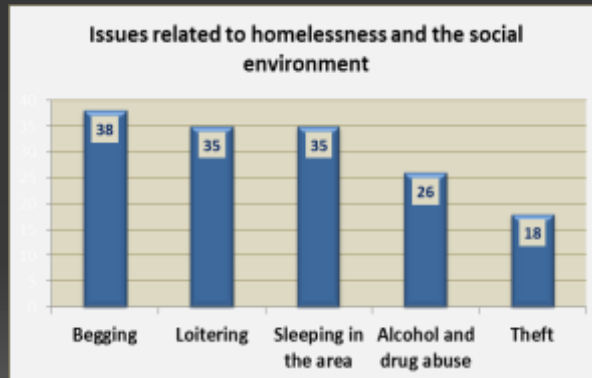
geoscentric





## Perception on social issues

52% of participants perceive homelessness as a problem in the area and 16% perceived it to be in specific places only.



gecentric



## What is a Special Ratings Area (SRA or CID)

- An SRA (Section 21 Company – now NPC) provides top-up services (security, cleansing and urban management) to those provided currently by the City of Cape Town
- A statutory body established under the SRA by-law (Provincial Gazette 6651/2009) previously known as a City Improvement District (CID)
- Funded by an additional rate collected from rate payers by the City and paid over to the SRA management board
- Funds raised are dedicated to provide additional services (security, cleaning, urban upgrades) exclusively within the SRA as per the business plan
- Cape Town has 24 SRAs in operation, and more communities have expressed interest to form SRAs.

gecentric



## Typical Benefits

- Well managed area
- Pride in communal achievements
- Social responsibility
- Environmental awareness (recycling, greening, energy efficiency, conservation)
- Attract new investments
- Market / promote area

gecentric











## The Legal Process

- ✓ Form steering committee
- ✓ Perform perception survey and feasibility study
- Draw up business plan
- Host Public Meeting
- Obtain 50% + 1 votes from property owners
- Submit application for an SRA
- Objection period
- Obtain approval from Council
- Appoint service providers
- Commence operations (1 July 2013)

ge+centric



## Question:

Do you in principle support the establishment  
of the  
Stikland SRA?

Raise your hand for yes

ge+centric



## Contact Details:

**Kurt Gouwsventer**  
**Chairman of the Stikland Industrial CID**  
**Steering Committee**  
**Tel: 021 905 8490**

or

**Gene Lohrentz**  
**Geocentric Information Systems**  
**Consultant to the Stikland CID**  
**083 255 7657**  
**Email: [gene@geocentric.co.za](mailto:gene@geocentric.co.za)**

**Website: [cityimprovement.co.za/stikland](http://cityimprovement.co.za/stikland)**

